



DIPOMPO
THE 'PUMP' SOLUTION

SERIES II - 6" x 6"

DATA SHEET

NET WEIGHT 413kg (910lbs)
SHIPPING WEIGHTS 437kg (965lbs)
IMPELLER DIA. 317,5mm (12.1/2")
R.P.M. FROM 850rpm TO 1950rpm
MAX. SOLIDS 31,75mm (1.1/4")

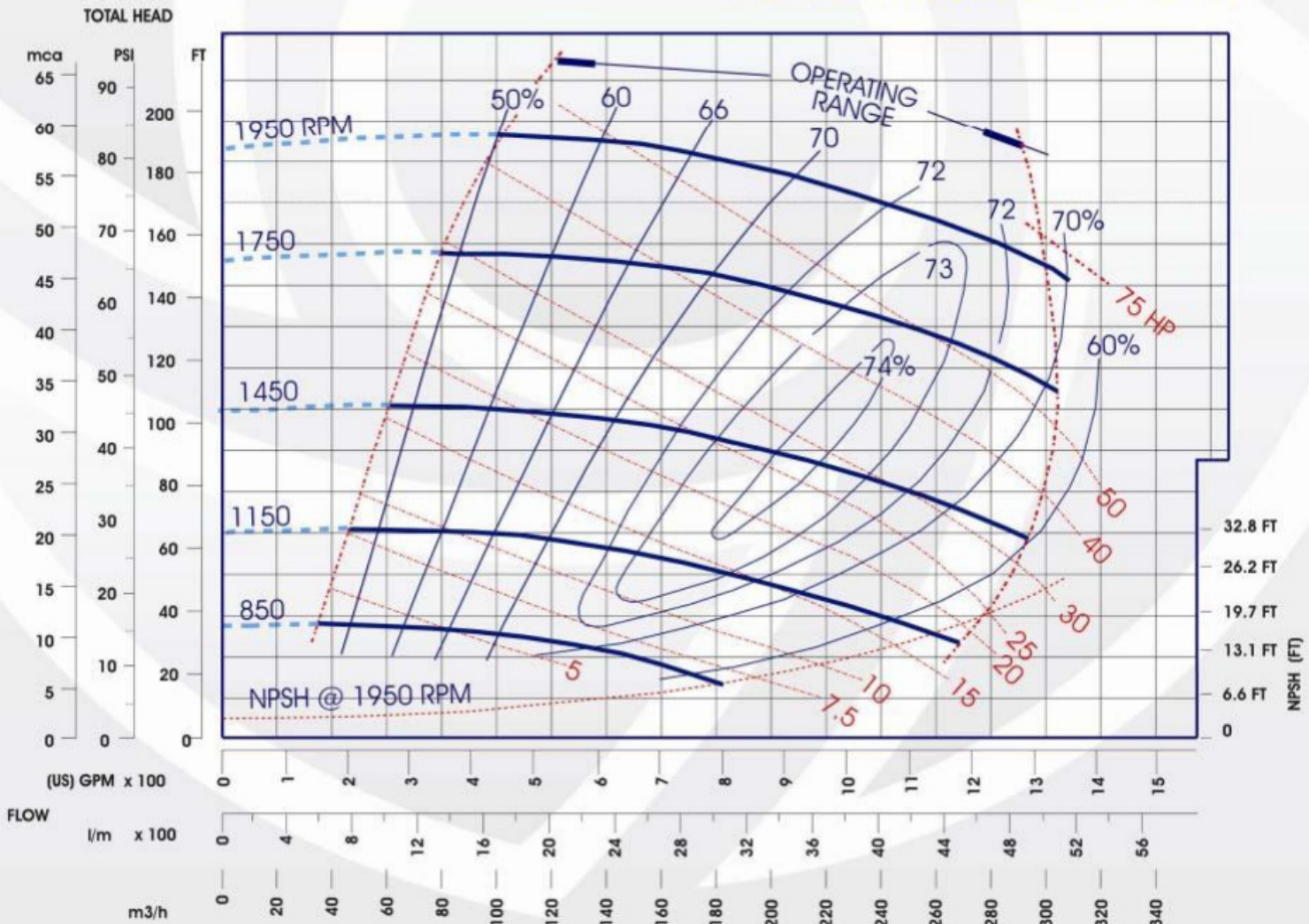
SELF-PRIMING

850 RPM 2,4m (8ft) - 1150 RPM 3,0m (10ft)
1450 RPM 4,2m (10ft) - 1750 RPM 4,5m (15ft)
1950 RPM 4,5m (15ft)

BEFORE USING THIS TABLE, CHECK THE NPSH.



PERFORMANCE CURVE 6"x6"



EXTERNAL DIMENSIONS

MILLIMETERS (INCHES)

